

WESTRA AUCTION

693 +/- Acres

**Germantown and
Middleton Townships
Turner County, SD**

We will sell the following real estate at public auction located Southwest of Lennox, Southeast of Chancellor. Auction to be held at Tract 3 land site.

Winterboer Farms, LLC, Owner

Thursday, March 10, 2022 at 10:30 AM



Westra Auction
LAND & REALTY

Joel R. Westra
Broker
Centerville, SD
605-310-6941

Joel A. Westra
Broker Associate
Chancellor, SD
605-957-5222

Phil Eggers
Broker Associate
Renner, SD
605-351-5438

Mark Zomer
Zomer Auction
Rock Valley, IA
712-470-2526

Blake Zomer
Online Rep.
Rock Valley, IA
712-460-2552

Pete Atkins
Broker Associate
Tea, SD
605-351-9847

Visit our website: www.westraauction.com

Turner County, SD, Land Auction

693 +/- Acres Middleton & Germantown Twp
6 Tracts of Cropland with Class I Soil

**We will sell the following real estate at public auction at
Tract 3 landsite located from Lennox, SD: 1 mile south on Highway 17,
4 miles west on 280th Street. From Chancellor, SD, 3 miles
south 461st Avenue, ½ mile east on 280th Street.**

Auctioneer's Note: We are honored to offer at auction the Winterboer Farms, LLC farmland; some of this land has been in the family since the 1880's. Don't miss the opportunity of a lifetime to purchase 693 acres of powerful productive Turner County farmland. These tracts of land feature soils containing 92% -98% Class I ratings. Rarely do you find this consistency in this many parcels of land. The properties are in close proximity to each other and within 5 miles of the Poet Chancellor Ethanol Plant. If you are looking to expand your farming operation or are in the market for an investment this land will not disappoint. The land has been in a corn and soybean rotation and is currently under lease for the 2022 crop year. The buyer will receive seller-enhanced rents for the 2022 crop year, for more information contact an auctioneer. All properties have been well-managed and cared for by the lessees. Make plans to attend this auction today, online bidding is available at www.westraauction.com.

The farms will be sold by the choice method. The first successful bidder will have the option to select any parcel of their choice. Choice of the remaining tracts will be offered again and this will continue until the last tract is sold. Each successful bidder will be allowed to select one tract at a time with the exception of contiguous Tracts 3 and 4 which can be bought individually or as a unit. Once a tract is sold it will remain sold.

Tract #1 79.55 acres: W ½ SW ¼ 15-98-52, Turner County, SD. Located in the northeast corner of the intersection of 461st Ave and 282nd St. The land includes some drain tile and a certified wetland determination. FSA estimates there is 80.64 acres of cropland with a 38.55 acre corn base, 157 bushel PLC yield and 38.55 acre soybean base, 44 bushel PLC yield. Soil rating: 0.863. According to Surety/Agdata the land has a productivity rating of 85.4, predominate soil is Wentworth-Chancellor-Wakonda silty clay loam, 0 to 2 percent slopes. Taxes \$2,196.74. Includes two building eligibilities.

Tract #2 98.46 acres: NW ¼, Except Tract A & Except Tracts 1 & 2 of Winterboer's Addition, 14-98-52, Turner County, SD. Located in the southeast corner of the intersection of 462nd Ave and 281st St. FSA estimates there is 94.5 acres of cropland with a 44.58 acre corn base, 160 bushel PLC yield and a 45.19 acre soybean base, 45 bushel PLC yield. Soil rating: 0.854. According to Surety/Agdata the land has a productivity rating of 85.4, predominate soil is Wentworth-Chancellor-Wakonda silty clay loam, 0 to 2 percent slopes. Taxes \$2,697.60. Includes two building eligibilities.

Tract #3 160 acres: NE ¼, 10-98-52, Turner County, SD. Located in the southwest corner of the intersection of 462nd Ave and 280th St. FSA estimates there is 161.17 acres of cropland with a 76.18 acre corn base, 160 bushel PLC yield and a 77.22 acre soybean base, 45 bushel PLC yield. Soil rating: 0.812. According to Surety/



Agridata the land has a productivity rating of 85.0, predominate soil is Wentworth-Chancellor-Wakonda silty clay loam, 0 to 2 percent slopes. Taxes \$3,937.14. Includes 4 building eligibilities.

Tract #4 128.51 acres: SE ¼, Less Strasser Addition, 10-98-52, Turner County, SD. Located ¼ mile west of the intersection of 462nd Ave and 281st St on the north side of 281st St. FSA estimates there is 133.01 acres of cropland with a 62.87 acre corn base, 160 bushel PLC yield and a 63.73 acre soybean base, 45 bushel PLC yield. Soil rating 0.845. According to Surety/Agridata the land has a productivity rating of 83.7, predominate soil is Wentworth-Chancellor-Wakonda silty clay loam, 0 to 2 percent slopes. Taxes \$3,450.20. Includes three building eligibilities.

Tract #5 153.58 acres: SE ¼, Except N 367' of S 1,273' of E 762', 34-99-52, Turner County, SD. Located in the northwest corner of the intersection of 462nd Ave and 279th St. FSA estimates there is 150.65 acres of cropland with a 72 acre corn base, 157 bushel PLC yield and a 72 acre soybean base, 44 bushel PLC yield. Soil rating: 0.842. According to Surety/Agridata the land has a productivity rating of 84.0, predominate soil is Wentworth-Chancellor-Wakonda silty clay loam 0-2 percent slopes. Taxes \$4,093.90. Includes three building eligibilities.

Tract #6 72.9 acres: E ½ NW ¼, Exc Bossman Tract 1 in NE ¼ NW ¼, 11-98-52, Turner County, SD. Located ¼ mile east of the intersection of 462nd Ave and 280th St on the south side of 280th St. FSA estimates there is 74.0 acres of cropland with a 34.97 acre corn base, 160 bushel PLC yield and a 35.45 acre soybean base, 45 bushel PLC yield. Soil rating: 0.857. According to Surety/Agridata the land has a productivity of 85.3, predominate soil is Wentworth-Chancellor-Wakonda silty clay loam 0-2 percent slopes. Taxes \$2,006.40. Includes one building eligibility.

TERMS: 15% nonrefundable down payment the day of the auction with balance due at closing on or before April 26, 2022. Buyer to receive the 2022 crop year lease payment. Title insurance and closing costs split 50/50 between buyer and seller. 2021 taxes due in 2022 to be paid by the seller. 2022 taxes due in 2023 to be paid by the buyer. The acres in these tracts are based on acres stated in the county tax records with acres to be understood to be "more or less". The sellers do not warranty or guarantee that the existing fences lie on the true and correct boundary and new fencing, if any, will be the responsibility of the purchaser pursuant to SD statutes. The land will be surveyed and paid for by the sellers. The property is sold in "as is" condition and as a cash sale with no financing contingency. Sold subject to existing easements, restrictions, reservations, or highway of record, if any. Information is deemed to be correct but it is not guaranteed. All prospective buyers are encouraged to inspect the property and verify all data provided. Statements made the day of sale take precedence over all written advertising. Real Estate licensees are agents for the seller. Sold subject to confirmation of owners.

For maps, pictures, video and more information visit: www.westraauction.com.

Winterboer Farms, LLC - Owner

Joel A. Westra, Auctioneer, Chancellor, SD 605-957-5222

Joel R. Westra, Auctioneer, Centerville, SD 605-310-6941

Mark Zomer, Auctioneer, Rock Valley, IA 712-470-2526

Pete Atkins, Broker Associate, Tea, SD, 605-351-9847

Blake Zomer, Online Rep., Rock Valley, IA, 712-460-2552



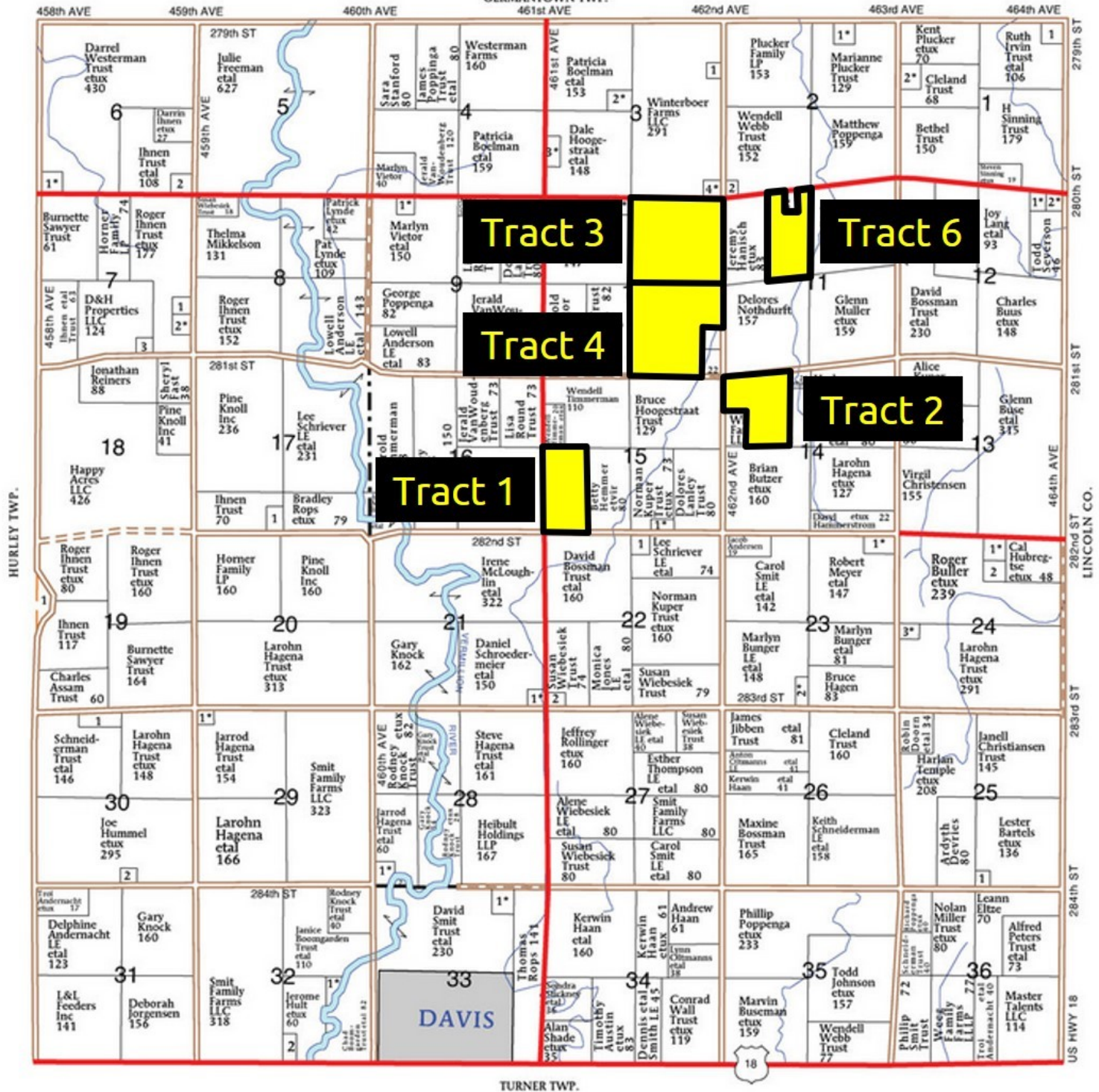
T-98-N

MIDDLETON PLAT

R-52-W

(Landowners)

GERMANTOWN TWP.



TURNER TWP.



westrauction.com

R-52-W



Tract 1



United States
Department of
Agriculture

Turner County, South Dakota



Common Land Unit PLSS

- Cropland
- Tract Boundary

Wetland Determination Identifiers

- Restricted Use
- Limited Restrictions
- Exempt from Conservation
- Compliance Provisions

2021 Program Year

Map Created May 05, 2021

Farm 7086

15-98N-52W-Turner

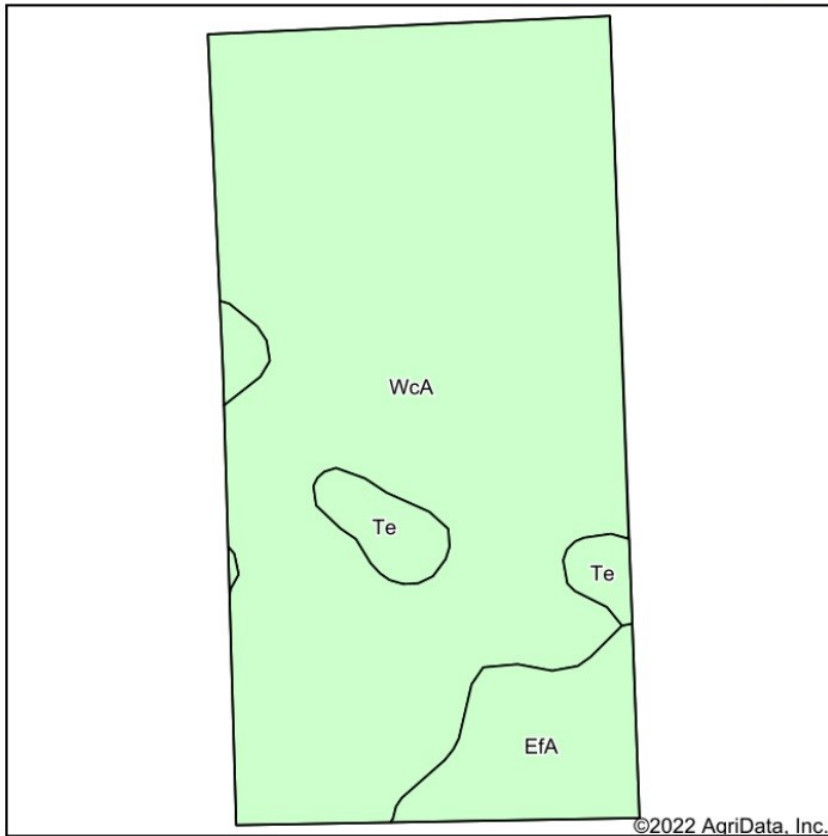
United States Department of Agriculture (USDA) Farm Service Agency (FSA) maps are for FSA Program administration only. This map does not represent a legal survey or reflect actual ownership; rather it depicts the information provided directly from the producer and/or National Agricultural Imagery Program (NAIP) imagery. The producer accepts the data 'as is' and assumes all risks associated with its use. USDA-FSA assumes no responsibility for actual or consequential damage incurred as a result of any user's reliance on this data outside FSA Programs. Wetland identifiers do not represent the size, shape, or specific determination of the area. Refer to your original determination (CRA-025 and attached maps) for exact boundaries and determinations or contact USDA Natural Resources Conservation Service (NRCS).



westrauction.com

Tract 1

Soils Map



Soils data provided by USDA and NRCS.



State: **South Dakota**
 County: **Turner**
 Location: **15-98N-52W**
 Township: **Middleton**
 Acres: **80.64**
 Date: **2/7/2022**



Westra Auction
 LAND & REALTY

Maps Provided By



© AgriData, Inc. 2021

surety
 CUSTOMIZED ONLINE MAPPING

www.AgriDataInc.com



Area Symbol: SD125, Soil Area Version: 23

Code	Soil Description	Acres	Percent of field	Non-Irr Class *c	Productivity Index	Alfalfa hay Tons	Barley Bu	Corn Bu	Soybeans Bu	Spring wheat Bu	*n NCCPI Soybeans
WcA	Wentworth-Chancellor-Wakonda silty clay loams, 0 to 2 percent slopes	68.68	85.2%	Iw	86	3.8	49	89	34	34	54
EfA	Egan-Trent silty clay loams, 0 to 2 percent slopes	8.64	10.7%	Is	92	4.7	55	94	36	38	61
Te	Tetonka silt loam, 0 to 1 percent slopes	3.32	4.1%	IVw	56						14
Weighted Average				1.12	85.4	3.7	47.6	85.9	32.8	33	*n 53.1

*n: The aggregation method is "Weighted Average using all components"

*c: Using Capabilities Class Dominant Condition Aggregation Method

Soils data provided by USDA and NRCS.



westrauction.com

Tract 1

South Dakota	U.S. Department of Agriculture	FARM: 7086
Turner	Farm Service Agency	Prepared: 1/14/22 1:17 PM
Report ID: FSA-156EZ	Abbreviated 156 Farm Record	Crop Year: 2022
		Page: 1 of 2

DISCLAIMER: This is data extracted from the web farm database. Because of potential messaging failures in MIDAS, this data is not guaranteed to be an accurate and complete representation of data contained in the MIDAS system, which is the system of record for Farm Records.

Tract Number: 1396 Description WSW 15 98 52

FSA Physical Location : Turner, SD ANSI Physical Location: Turner, SD

BIA Range Unit Number: 1

HEL Status: NHEL: no agricultural commodity planted on undetermined fields

Wetland Status: Tract contains a wetland or farmed wetland

WL Violations: None

Farmland	Cropland	DCP Cropland	WBP	WRP	EWP	CRP Cropland	GRP
80.64	80.64	80.64	0.0	0.0	0.0	0.0	0.0
State Conservation	Other Conservation	Effective DCP Cropland	Double Cropped	MPL/FWP		Native Sod	
0.0	0.0	80.64	0.0	0.0		0.0	

Crop	Base Acreage	PLC Yield	CCC-505 CRP Reduction
CORN	38.55	157	0.00
SOYBEANS	38.55	44	0.00
Total Base Acres:	77.1		

Owners: WINTERBOER FARMS, LLC



Tract 1

Certified Wetland Determination

Field Office: Parker FO
Certified By: Merris Miller
Legal Desc: W2 SW4 15-98-52

Agency: USDA-NRCS
Certified Date: 4/25/2012
Tract: 1396



Legend

- Certified Wetland Determination Boundary
- Wetlands
- Wetlands
- Ditch
- NI
- NI/Ditch
- Tile

0 155 310 620 930 1,240 1,550 1,860 Feet

W Wetland
FW Farmed Wetland Drained or modified & cropped prior to 12-23-1985, but still meets wetland criteria
PC Prior Converted
NW Non Wetland
NI Not Inventoried Potential Waters of the US
See NRCS CPA-O26E for definitions and additional info.

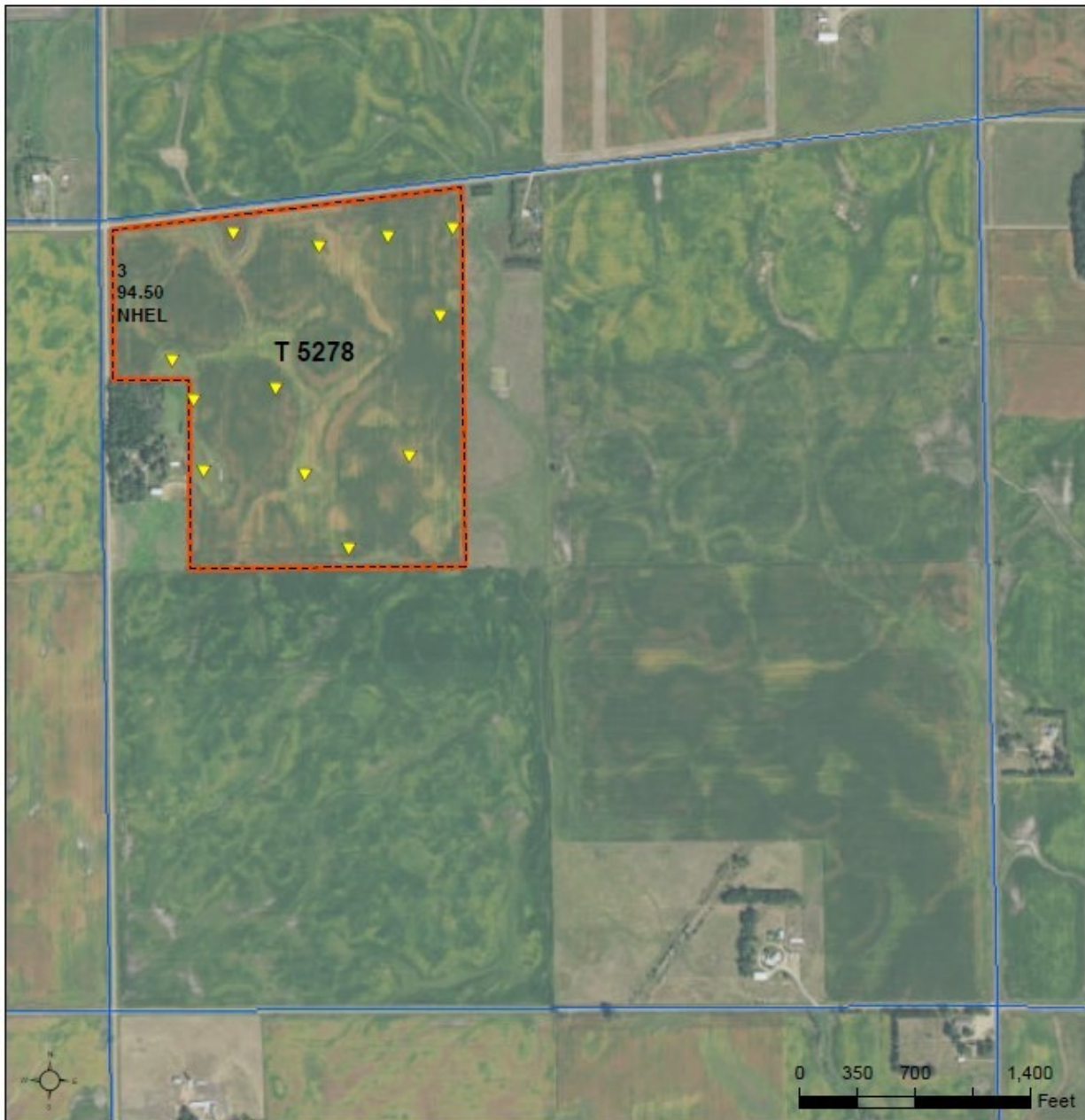


Tract 2



United States
Department of
Agriculture

Turner County, South Dakota



Common Land Unit PLSS

Cropland

Tract Boundary

Wetland Determination Identifiers

● Restricted Use

▼ Limited Restrictions

■ Exempt from Conservation
Compliance Provisions

2021 Program Year

Map Created May 05, 2021

Farm 7281

14-98N-52W-Turner

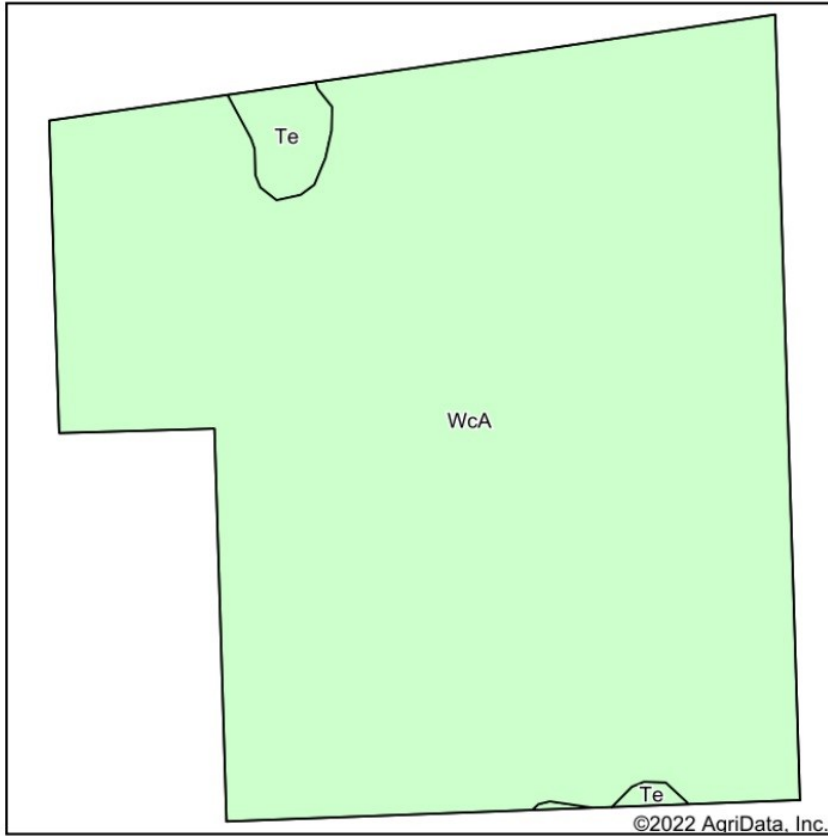
United States Department of Agriculture (USDA) Farm Service Agency (FSA) maps are for FSA Program administration only. This map does not represent a legal survey or reflect actual ownership; rather it depicts the information provided directly from the producer and/or National Agricultural Imagery Program (NAIP) Imagery. The producer accepts the data 'as is' and assumes all risks associated with its use. USDA-FSA assumes no responsibility for actual or consequential damage incurred as a result of any user's reliance on this data outside FSA Programs. Wetland Identifiers do not represent the size, shape, or specific determination of the area. Refer to your original determination (CPA-026 and attached maps) for exact boundaries and determinations or contact USDA Natural Resources Conservation Service (NRCS).



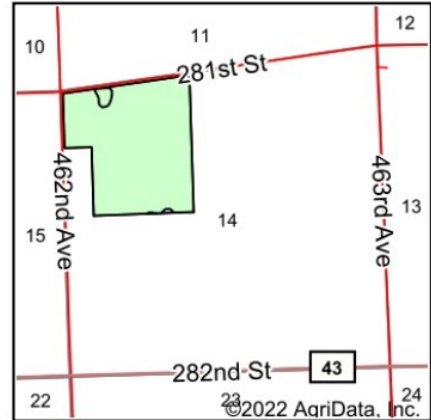
westrauction.com

Tract 2

Soils Map



Soils data provided by USDA and NRCS.



State: **South Dakota**
 County: **Turner**
 Location: **14-98N-52W**
 Township: **Middleton**
 Acres: **94.34**
 Date: **2/7/2022**



Westra Auction
 LAND & REALTY

Maps Provided By



surety
 CUSTOMIZED ONLINE MAPPING
 © AgriData, Inc. 2021 www.AgriDataInc.com



Area Symbol: SD125, Soil Area Version: 23

Code	Soil Description	Acres	Percent of field	Non-Irr Class *c	Productivity Index	Alfalfa hay Tons	Barley Bu	Corn Bu	Soybeans Bu	Spring wheat Bu	*n NCCPI Soybeans
WcA	Wentworth-Chancellor-Wakonda silty clay loams, 0 to 2 percent slopes	92.43	98.0%	Iw	86	3.8	49	89	34	34	54
Te	Tetonka silt loam, 0 to 1 percent slopes	1.91	2.0%	IVw	56						14
Weighted Average				1.06	85.4	3.7	48	87.2	33.3	33.3	*n 53.2

*n: The aggregation method is "Weighted Average using all components"

*c: Using Capabilities Class Dominant Condition Aggregation Method

Soils data provided by USDA and NRCS.



westrauction.com

Tract 2

South Dakota	U.S. Department of Agriculture	FARM: 7281
Turner	Farm Service Agency	Prepared: 1/14/22 1:18 PM
Report ID: FSA-156EZ	Abbreviated 156 Farm Record	Crop Year: 2022
DISCLAIMER: This is data extracted from the web farm database. Because of potential messaging failures in MIDAS, this data is not guaranteed to be an accurate and complete representation of data contained in the MIDAS system, which is the system of record for Farm Records.		Page: 2 of 3
Other Producers: None		

Tract Number: 5278 Description NW EXC 27 AC AND 12 ACRES 14 98 52

FSA Physical Location : Turner, SD ANSI Physical Location: Turner, SD

BIA Range Unit Number:

HEL Status: NHEL: no agricultural commodity planted on undetermined fields

Wetland Status: Tract contains a wetland or farmed wetland

WL Violations: None

Farmland	Cropland	DCP Cropland	WBP	WRP	EWP	CRP Cropland	GRP
94.5	94.5	94.5	0.0	0.0	0.0	0.0	0.0
State Conservation	Other Conservation	Effective DCP Cropland	Double Cropped	MPL/FWP	Native Sod		
0.0	0.0	94.5	0.0	0.0	0.0		

Crop	Base Acreage	PLC Yield	CCC-505 CRP Reduction
CORN	44.58	160	0.00
SOYBEANS	45.19	45	0.00
Total Base Acres:	89.77		

Owners: WINTERBOER FARMS, LLC

Other Producers: None



Tract 2

OFFICIAL WETLAND DETERMINATION for Highlighted Tracts Only

- (W) Wetland
- (FW) Ditched or tilled prior to 12-23-85 but still wetland
- (PC) Converted Wetland prior to 12-23-85
- (CW) Converted Wetland after 12-23-85
- (---) Ditched prior to 12-23-85
- (---) Tiled prior to 12-23-85
- (---W---) Wetland in a channel



Tract 3



United States
Department of
Agriculture

Turner County, South Dakota



Common Land Unit

Non-Cropland
Cropland

Tract Boundary
PLSS

Wetland Determination Identifiers

Restricted Use
Limited Restrictions
Exempt from Conservation
Compliance Provisions

2021 Program Year

Map Created May 05, 2021

Farm 7281

10-98N-52W-Turner

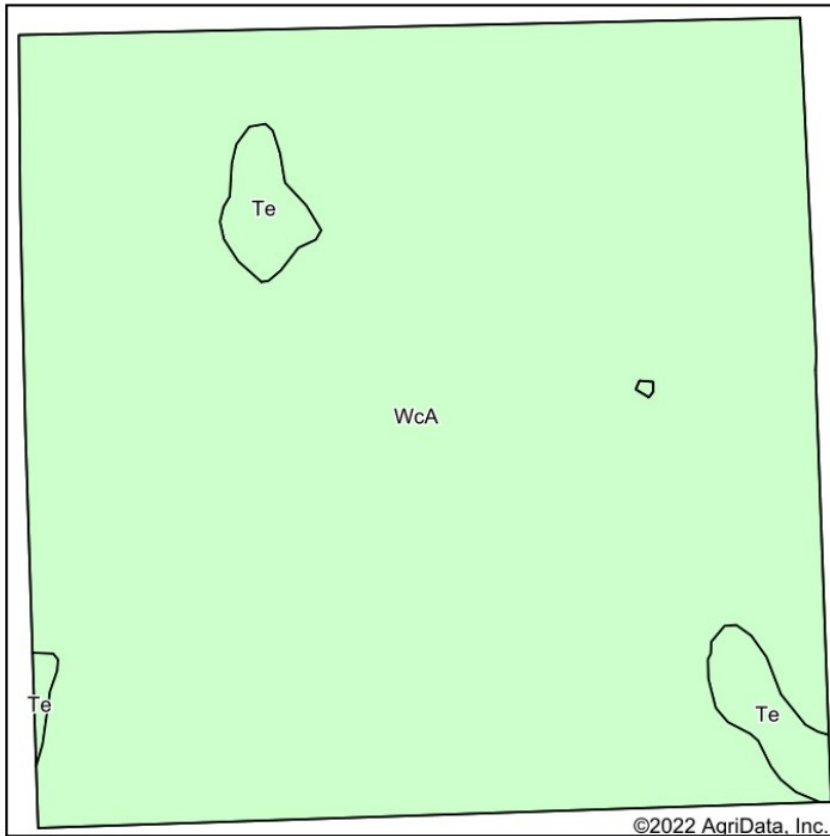
United States Department of Agriculture (USDA) Farm Service Agency (FSA) maps are for FSA Program administration only. This map does not represent a legal survey or reflect actual ownership; rather it depicts the information provided directly from the producer and/or National Agricultural Imagery Program (NAIP) imagery. The producer accepts the data 'as is' and assumes all risks associated with its use. USDA-FSA assumes no responsibility for actual or consequential damage incurred as a result of any user's reliance on this data outside FSA Programs. Wetland identifiers do not represent the size, shape, or specific determination of the area. Refer to your original determination (CPA-026 and attached maps) for exact boundaries and determinations or contact USDA Natural Resources Conservation Service (NRCS).



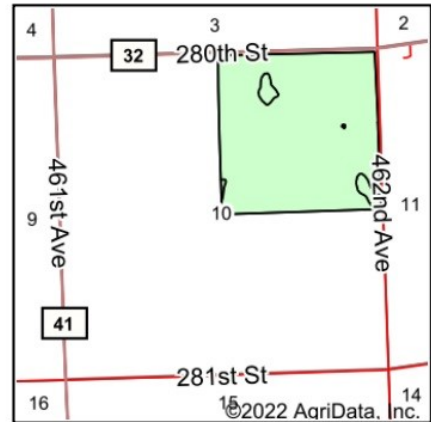
westrauction.com

Tract 3

Soils Map



Soils data provided by USDA and NRCS.



State: **South Dakota**
 County: **Turner**
 Location: **10-98N-52W**
 Township: **Middleton**
 Acres: **161.15**
 Date: **2/7/2022**



Westra Auction
 LAND & REALTY

Maps Provided By



© AgriData, Inc. 2021

surety
 CUSTOMIZED ONLINE MAPPING

www.AgriDataInc.com



Area Symbol: SD125, Soil Area Version: 23

Code	Soil Description	Acres	Percent of field	Non-Irr Class *c	Productivity Index	Alfalfa hay Tons	Barley Bu	Corn Bu	Soybeans Bu	Spring wheat Bu	*n NCCPI Soybeans
WcA	Wentworth-Chancellor-Wakonda silty clay loams, 0 to 2 percent slopes	155.71	96.6%	Iw	86	3.8	49	89	34	34	54
Te	Tetonka silt loam, 0 to 1 percent slopes	5.44	3.4%	IVw	56						14
Weighted Average				1.10	85	3.7	47.3	86	32.9	32.9	*n 52.6

*n: The aggregation method is "Weighted Average using all components"

*c: Using Capabilities Class Dominant Condition Aggregation Method

Soils data provided by USDA and NRCS.



westrauction.com

Tract 3

SOUTH DAKOTA
TURNER
Form: FSA-156EZ



Abbreviated 156 Farm Record

FARM : 7281
Prepared : 2/3/22 1:58 PM
Crop Year : 2022

Tract Number	:	8148
Description	:	NE 10 98 52
FSA Physical Location	:	SOUTH DAKOTA/TURNER
ANSI Physical Location	:	SOUTH DAKOTA/TURNER
BIA Unit Range Number	:	
HEL Status	:	NHEL: No agricultural commodity planted on undetermined fields
Wetland Status	:	Wetland determinations not complete
WL Violations	:	None
Owners	:	WINTERBOER FARMS, LLC
Other Producers	:	None
Recon ID	:	46-125-2022-55

Tract Land Data							
Farm Land	Cropland	DCP Cropland	WBP	WRP	CRP	GRP	Sugarcane
161.17	161.17	161.17	0.00	0.00	0.00	0.00	0.00
State Conservation	Other Conservation	Effective DCP Cropland	Double Cropped	MPL	EWP	DCP Ag. Rel Activity	Broken From Native Sod
0.00	0.00	161.17	0.00	0.00	0.00	0.00	0.00

DCP Crop Data			
Crop Name	Base Acres	CCC-505 CRP Reduction Acres	PLC Yield
Corn	76.18	0.00	160
Soybeans	77.22	0.00	45
TOTAL	153.40	0.00	

NOTES

In accordance with Federal civil rights law and U.S. Department of Agriculture (USDA) civil rights regulations and policies, the USDA, its Agencies, offices, and employees, and institutions participating in or administering USDA programs are prohibited from discriminating based on race, color, national origin, religion, sex, gender identity (including gender expression), sexual orientation, disability, age, marital status, family/parental status, income derived from a public assistance program, political beliefs, or reprisal or retaliation for prior civil rights activity, in any program or activity conducted or funded by USDA (not all bases apply to all programs). Remedies and complaint filing deadlines vary by program or incident.

Persons with disabilities who require alternative means of communication for program information (e.g., Braille, large print, audiotape, American Sign Language, etc.) should contact the responsible Agency or USDA's TARGET Center at (202) 720-2600 (voice and TTY) or contact USDA through the Federal Relay Service at (800) 877-8339. Additionally, program information may be made available in languages other than English.

To file a program discrimination complaint, complete the USDA Program Discrimination Complaint Form, AD-3027, found online at http://www.ascr.usda.gov/complaint_filing_cust.html and at any USDA office or write a letter addressed to USDA and provide in the letter all of the information requested in the form. To request a copy of the complaint form, call (866) 632-9992. Submit your completed form or letter to USDA by: (1) mail: U.S. Department of Agriculture Office of the Assistant Secretary for Civil Rights 1400 Independence Avenue, SW Washington, D.C. 20250-9410; (2) fax: (202) 690-7442; or (3) e-mail: program.intake@usda.gov. USDA is an equal opportunity provider, employer, and lender.



westraauction.com

Tract 3



Tract 4



United States
Department of
Agriculture

Turner County, South Dakota



Common Land Unit

Non-Cropland
Cropland

Tract Boundary
PLSS

Wetland Determination Identifiers

Restricted Use
Limited Restrictions
Exempt from Conservation
Compliance Provisions

2021 Program Year

Map Created May 05, 2021

Farm 7281

10-98N-52W-Turner

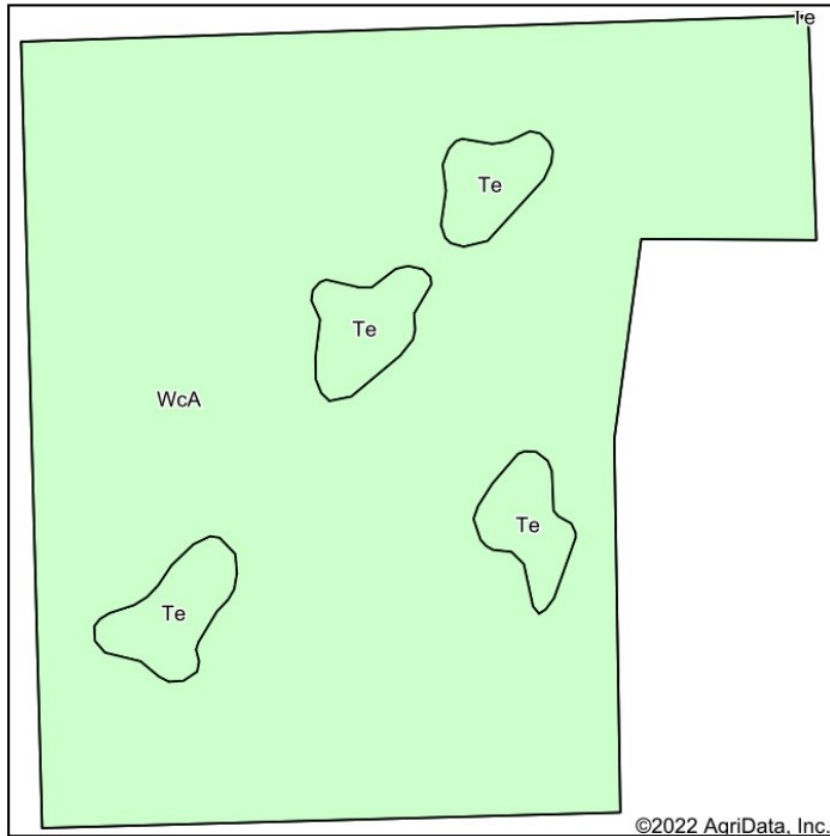
United States Department of Agriculture (USDA) Farm Service Agency (FSA) maps are for FSA Program administration only. This map does not represent a legal survey or reflect actual ownership; rather it depicts the information provided directly from the producer and/or National Agricultural Imagery Program (NAIP) imagery. The producer accepts the data 'as is' and assumes all risks associated with its use. USDA-FSA assumes no responsibility for actual or consequential damage incurred as a result of any user's reliance on this data outside FSA Programs. Wetland identifiers do not represent the size, shape, or specific determination of the area. Refer to your original determination (CPA-026 and attached maps) for exact boundaries and determinations or contact USDA Natural Resources Conservation Service (NRCS).



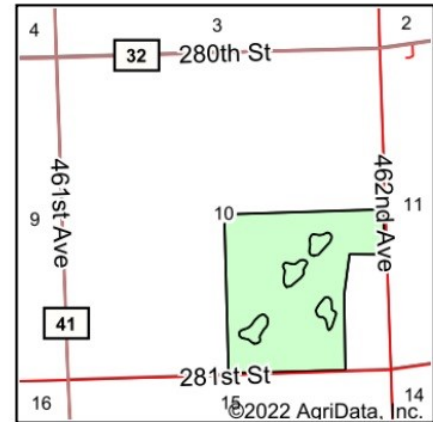
westrauction.com

Tract 4

Soils Map



Soils data provided by USDA and NRCS.



State: **South Dakota**
 County: **Turner**
 Location: **10-98N-52W**
 Township: **Middleton**
 Acres: **133.03**
 Date: **2/7/2022**



Westra Auction
 LAND & REALTY

Maps Provided By



surety
 CUSTOMIZED ONLINE MAPPING
 © AgriData, Inc. 2021 www.AgriDataInc.com



Area Symbol: SD125, Soil Area Version: 23

Code	Soil Description	Acres	Percent of field	Non-Irr Class *c	Productivity Index	Alfalfa hay Tons	Barley Bu	Corn Bu	Soybeans Bu	Spring wheat Bu	*n NCCPI Soybeans
WcA	Wentworth-Chancellor-Wakonda silty clay loams, 0 to 2 percent slopes	122.88	92.4%	Iw	86	3.8	49	89	34	34	54
Te	Tetonka silt loam, 0 to 1 percent slopes	10.15	7.6%	IVw	56						14
Weighted Average				1.23	83.7	3.5	45.3	82.2	31.4	31.4	*n 50.9

*n: The aggregation method is "Weighted Average using all components"

*c: Using Capabilities Class Dominant Condition Aggregation Method

Soils data provided by USDA and NRCS.



westrauction.com

Tract 4

SOUTH DAKOTA
TURNER
Form: FSA-156EZ



Abbreviated 156 Farm Record

FARM : 7281
Prepared : 2/3/22 1:58 PM
Crop Year : 2022

Tract Number : 8147
Description : SE except east 10 98 52
FSA Physical Location : SOUTH DAKOTA/TURNER
ANSI Physical Location : SOUTH DAKOTA/TURNER
BIA Unit Range Number :
HEL Status : NHEL: No agricultural commodity planted on undetermined fields
Wetland Status : Wetland determinations not complete
WL Violations : None
Owners : WINTERBOER FARMS, LLC
Other Producers : None
Recon ID : 46-125-2022-55

Tract Land Data

Farm Land	Cropland	DCP Cropland	WBP	WRP	CRP	GRP	Sugarcane
133.01	133.01	133.01	0.00	0.00	0.00	0.00	0.00
State Conservation	Other Conservation	Effective DCP Cropland	Double Cropped	MPL	EWP	DCP Ag. Rel Activity	Broken From Native Sod
0.00	0.00	133.01	0.00	0.00	0.00	0.00	0.00

DCP Crop Data

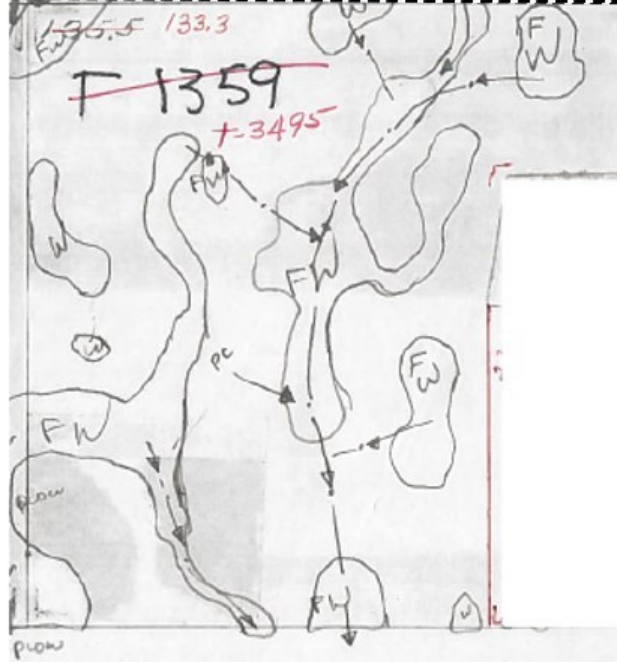
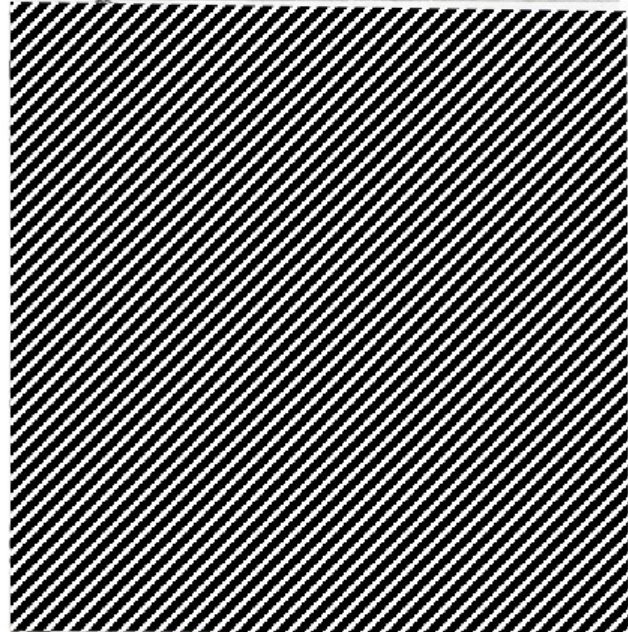
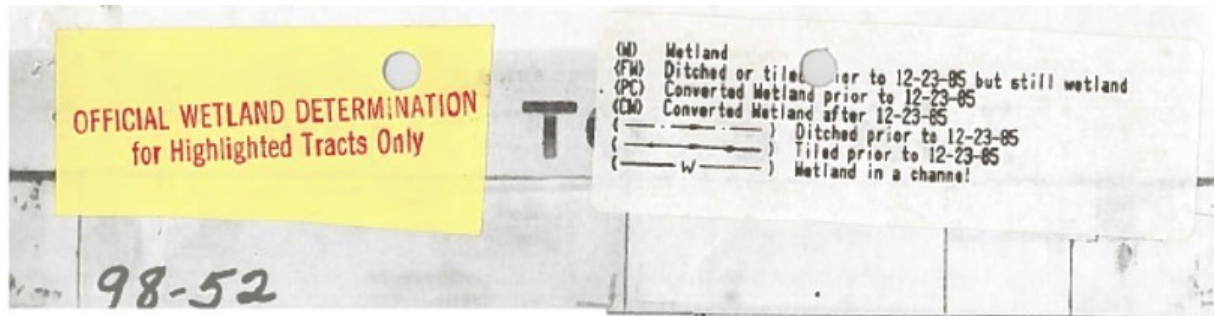
Crop Name	Base Acres	CCC-505 CRP Reduction Acres	PLC Yield
Corn	62.87	0.00	160
Soybeans	63.73	0.00	45
TOTAL	126.60	0.00	

NOTES

--



Tract 4







Tract 5






United States
Department of
Agriculture

Turner County, South Dakota



Common Land Unit  Tract Boundary
 Non-Cropland  PLSS
 Cropland

Wetland Determination Identifiers

-  Restricted Use
-  Limited Restrictions
-  Exempt from Conservation Compliance Provisions

2021 Program Year

Map Created May 05, 2021

Farm 7086

34-99N-52W-Turner

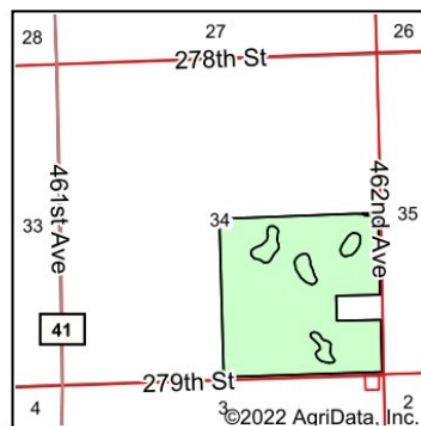
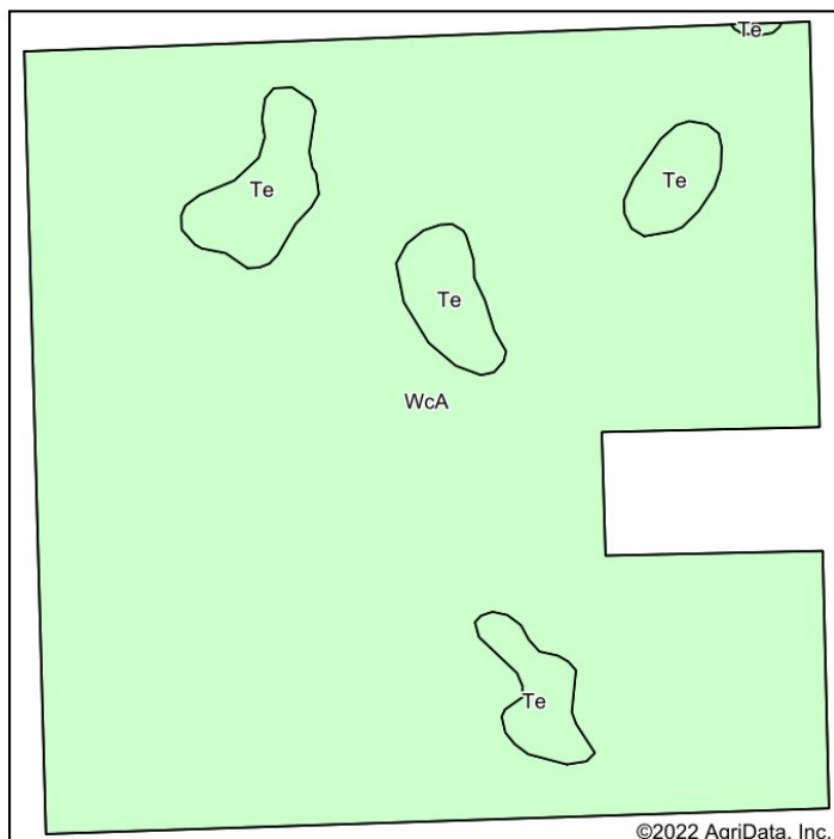
United States Department of Agriculture (USDA) Farm Service Agency (FSA) maps are for FSA Program administration only. This map does not represent a legal survey or reflect actual ownership; rather it depicts the information provided directly from the producer and/or National Agricultural Imagery Program (NAIP) imagery. The producer accepts the data 'as is' and assumes all risks associated with its use. USDA-FSA assumes no responsibility for actual or consequential damage incurred as a result of any user's reliance on this data outside FSA Programs. Wetland identifiers do not represent the size, shape, or specific determination of the area. Refer to your original determination (CPA-026 and attached maps) for exact boundaries and determinations or contact USDA Natural Resources Conservation Service (NRCS).



westrauction.com

Tract 5

Soils Map



State: **South Dakota**
 County: **Turner**
 Location: **34-99N-52W**
 Township: **Germantown**
 Acres: **150.65**
 Date: **2/7/2022**



Westra Auction
 LAND & REALTY

Maps Provided By



surety
 CUSTOMIZED ONLINE MAPPING

© AgriData, Inc. 2021

www.AgriDataInc.com



Soils data provided by USDA and NRCS.

Area Symbol: SD125, Soil Area Version: 23												
Code	Soil Description	Acres	Percent of field	Non-Irr Class *c	Productivity Index	Alfalfa hay Tons	Barley Bu	Corn Bu	Soybeans Bu	Spring wheat Bu	*n NCCPI Soybeans	
WcA	Wentworth-Chancellor-Wakonda silty clay loams, 0 to 2 percent slopes	140.55	93.3%	Iw	86	3.8	49	89	34	34	54	
Te	Tetonka silt loam, 0 to 1 percent slopes	10.10	6.7%	IVw	56						14	
Weighted Average				1.20	84	3.5	45.7	83	31.7	31.7	*n 51.3	

*n: The aggregation method is "Weighted Average using all components"

*c: Using Capabilities Class Dominant Condition Aggregation Method

Soils data provided by USDA and NRCS.



westrauction.com

Tract 5

FARM: 7086

South Dakota

U.S. Department of Agriculture

Prepared: 1/14/22 1:17 PM

Turner

Farm Service Agency

Crop Year: 2022

Report ID: FSA-156EZ

Abbreviated 156 Farm Record

Page: 2 of 2

DISCLAIMER: This is data extracted from the web farm database. Because of potential messaging failures in MIDAS, this data is not guaranteed to be an accurate and complete representation of data contained in the MIDAS system, which is the system of record for Farm Records.

Other Producers: None

Tract Number: 5813 Description SE 34 99 52

FSA Physical Location : Turner, SD

ANSI Physical Location: Turner, SD

BIA Range Unit Number:

HEL Status: NHEL: no agricultural commodity planted on undetermined fields

Wetland Status: Wetland determinations not complete

WL Violations: None

Farmland	Cropland	DCP Cropland	WBP	WRP	EWP	CRP Cropland	GRP
157.53	150.65	150.65	0.0	0.0	0.0	0.0	0.0
State Conservation	Other Conservation	Effective DCP Cropland	Double Cropped	MPL/FWP	Native Sod		
0.0	0.0	150.65	0.0	0.0	0.0		

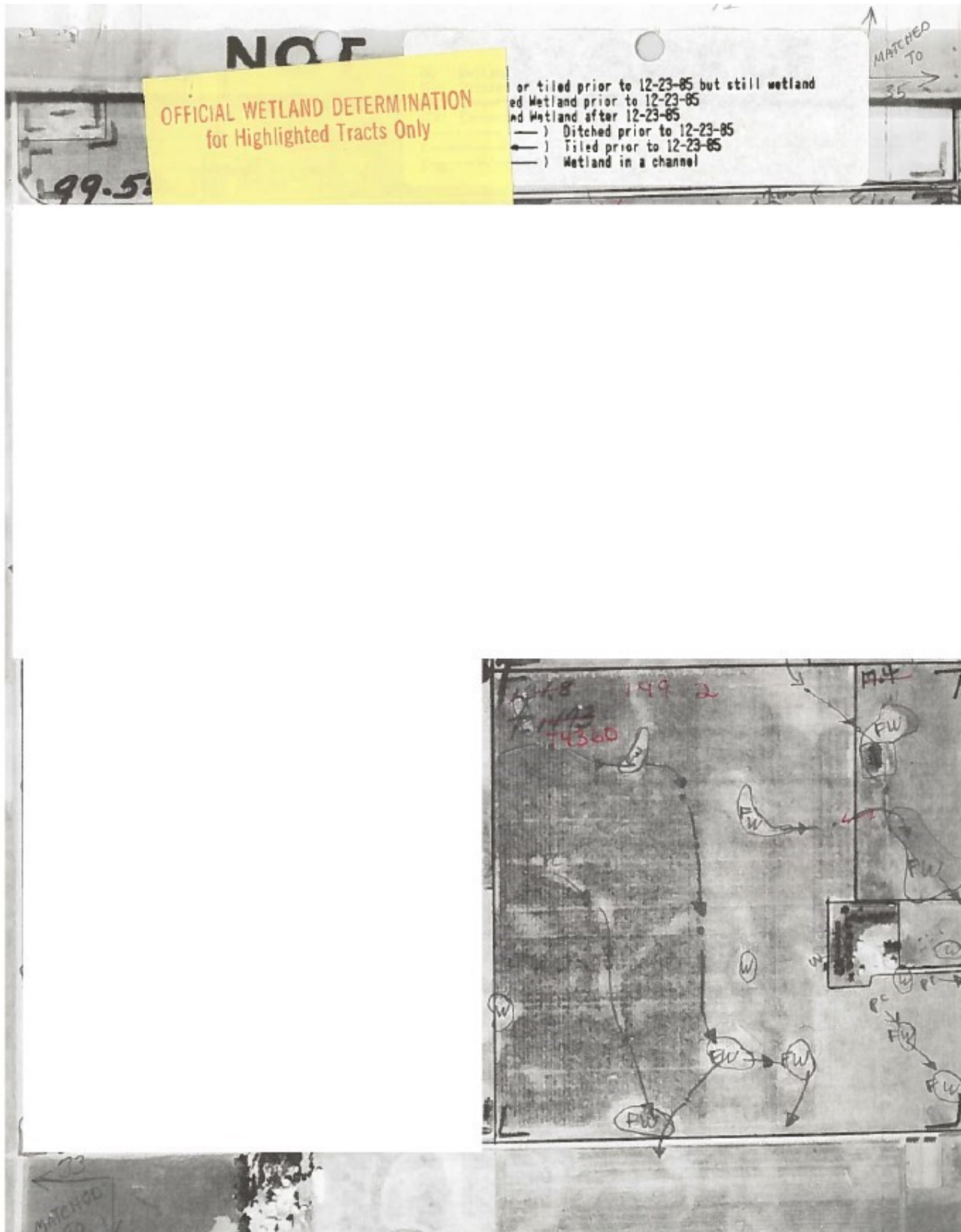
Crop	Base Acreage	PLC Yield	CCC-505 CRP Reduction
CORN	72.0	157	0.00
SOYBEANS	72.0	44	0.00
Total Base Acres:	144.0		

Owners: WINTERBOER FARMS, LLC

Other Producers: None



Tract 5

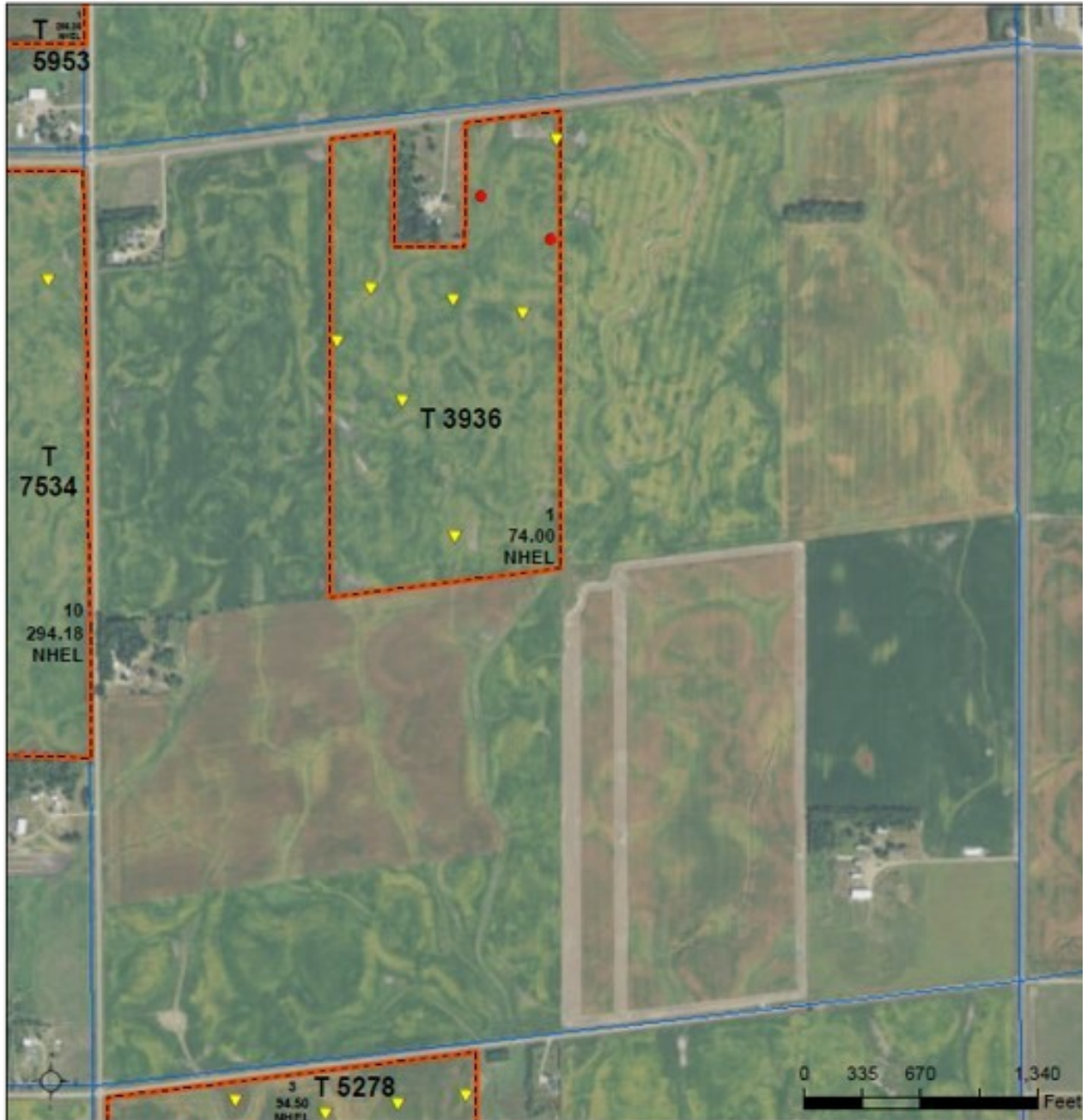


Tract 6



United States
Department of
Agriculture

Turner County, South Dakota



Common Land Unit PLSS

 Cropland

 Tract Boundary

Wetland Determination Identifiers

● Restricted Use

▲ Limited Restrictions

■ Exempt from Conservation

Compliance Provisions

2021 Program Year

Map Created May 05, 2021

Farm 728

11-98N-52W-Turne

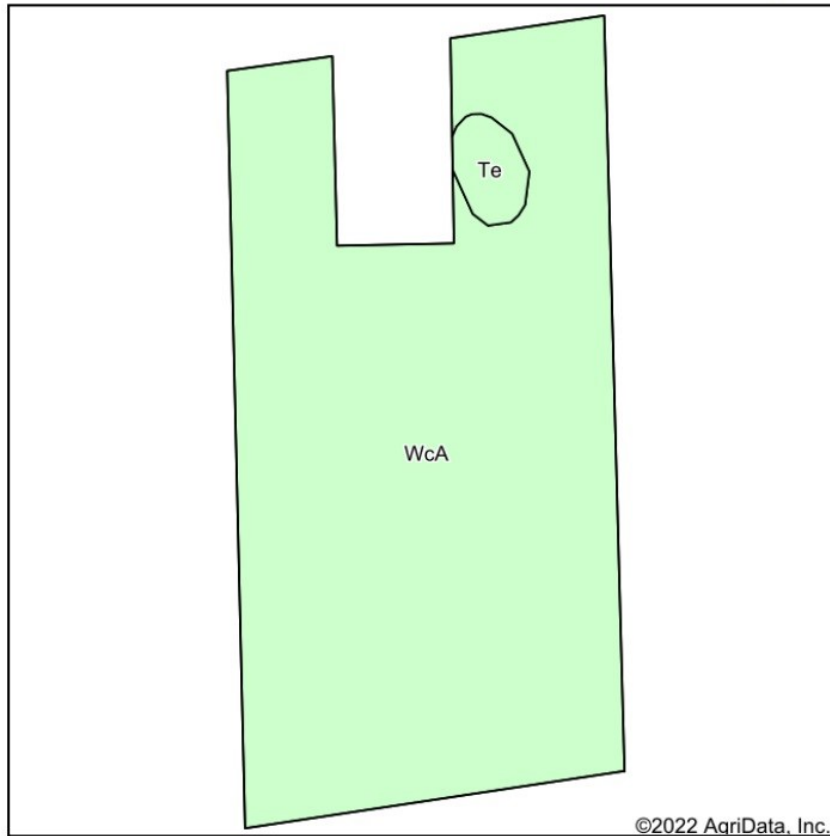
United States Department of Agriculture (USDA) Farm Service Agency (FSA) maps are for FSA Program administration only. This map does not represent a legal survey or reflect actual ownership; rather it depicts the information provided directly from the producer and/or National Agricultural Imagery Program (NAIP) imagery. The producer accepts the data 'as is' and assumes all risks associated with its use. USDA-FSA assumes no responsibility for actual or consequential damage incurred as a result of any user's reliance on this data outside FSA Programs. Wetland identifiers do not represent the size, shape, or specific determination of the area. Refer to your original determination (CRA-026 and attached maps) for exact boundaries and determinations or contact USDA Natural Resources Conservation Service (NRCS).



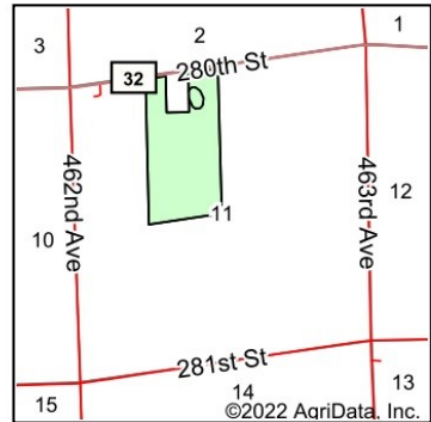
westrauction.com

Tract 6

Soils Map



Soils data provided by USDA and NRCS.



State: **South Dakota**
 County: **Turner**
 Location: **11-98N-52W**
 Township: **Middleton**
 Acres: **74**
 Date: **1/12/2022**



Westra Auction
 LAND & REALTY

Maps Provided By



Area Symbol: SD125, Soil Area Version: 23

Code	Soil Description	Acres	Percent of field	Non-Irr Class *c	Productivity Index	Alfalfa hay Tons	Barley Bu	Corn Bu	Soybeans Bu	Spring wheat Bu	*n NCCPI Soybeans
WcA	Wentworth-Chancellor-Wakonda silty clay loams, 0 to 2 percent slopes	72.21	97.6%	Iw	86	3.8	49	89	34	34	54
Te	Tetonka silt loam, 0 to 1 percent slopes	1.79	2.4%	IVw	56						14
Weighted Average				1.07	85.3	3.7	47.8	86.8	33.2	33.2	*n 53

*n: The aggregation method is "Weighted Average using all components"

*c: Using Capabilities Class Dominant Condition Aggregation Method

Soils data provided by USDA and NRCS.



westraauction.com

Tract 6

South Dakota	U.S. Department of Agriculture	FARM: 7281
Turner	Farm Service Agency	Prepared: 1/14/22 1:18 PM
Report ID: FSA-156EZ	Abbreviated 156 Farm Record	Crop Year: 2022
		Page: 1 of 3

DISCLAIMER: This is data extracted from the web farm database. Because of potential messaging failures in MIDAS, this data is not guaranteed to be an accurate and complete representation of data contained in the MIDAS system, which is the system of record for Farm Records.

Tract Number: 3936 Description: ENW 11 98 52 LESS 7A ACREAGE

FSA Physical Location: Turner, SD ANSI Physical Location: Turner, SD

BIA Range Unit Number:

HEL Status: NHEL: no agricultural commodity planted on undetermined fields

Wetland Status: Wetland determinations not complete

WL Violations: None

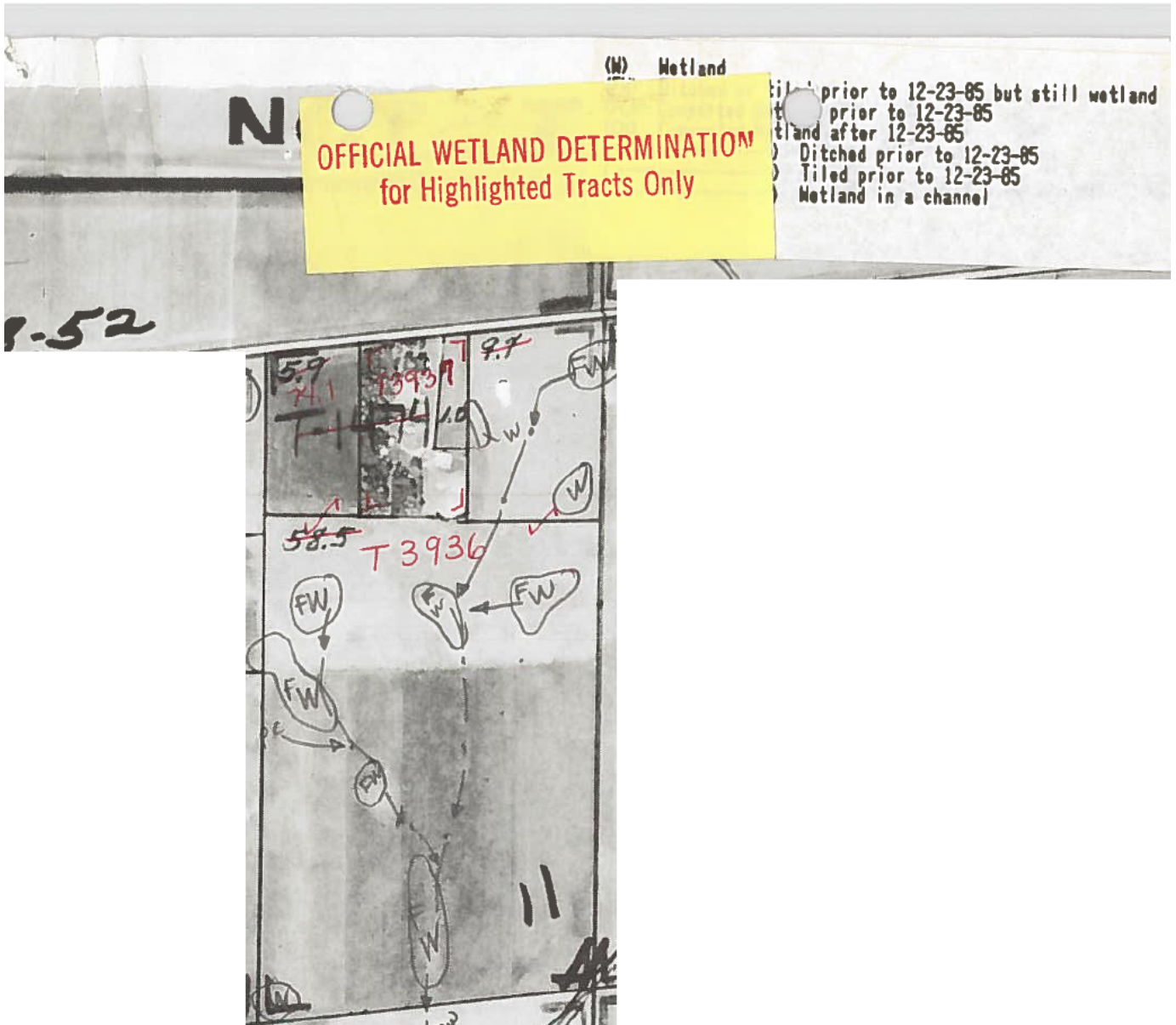
Farmland	Cropland	DCP Cropland	WBP	WRP	EWP	CRP Cropland	GRP
74.0	74.0	74.0	0.0	0.0	0.0	0.0	0.0
State Conservation	Other Conservation	Effective DCP Cropland	Double Cropped	MPL/FWP	Native Sod		
0.0	0.0	74.0	0.0	0.0	0.0		

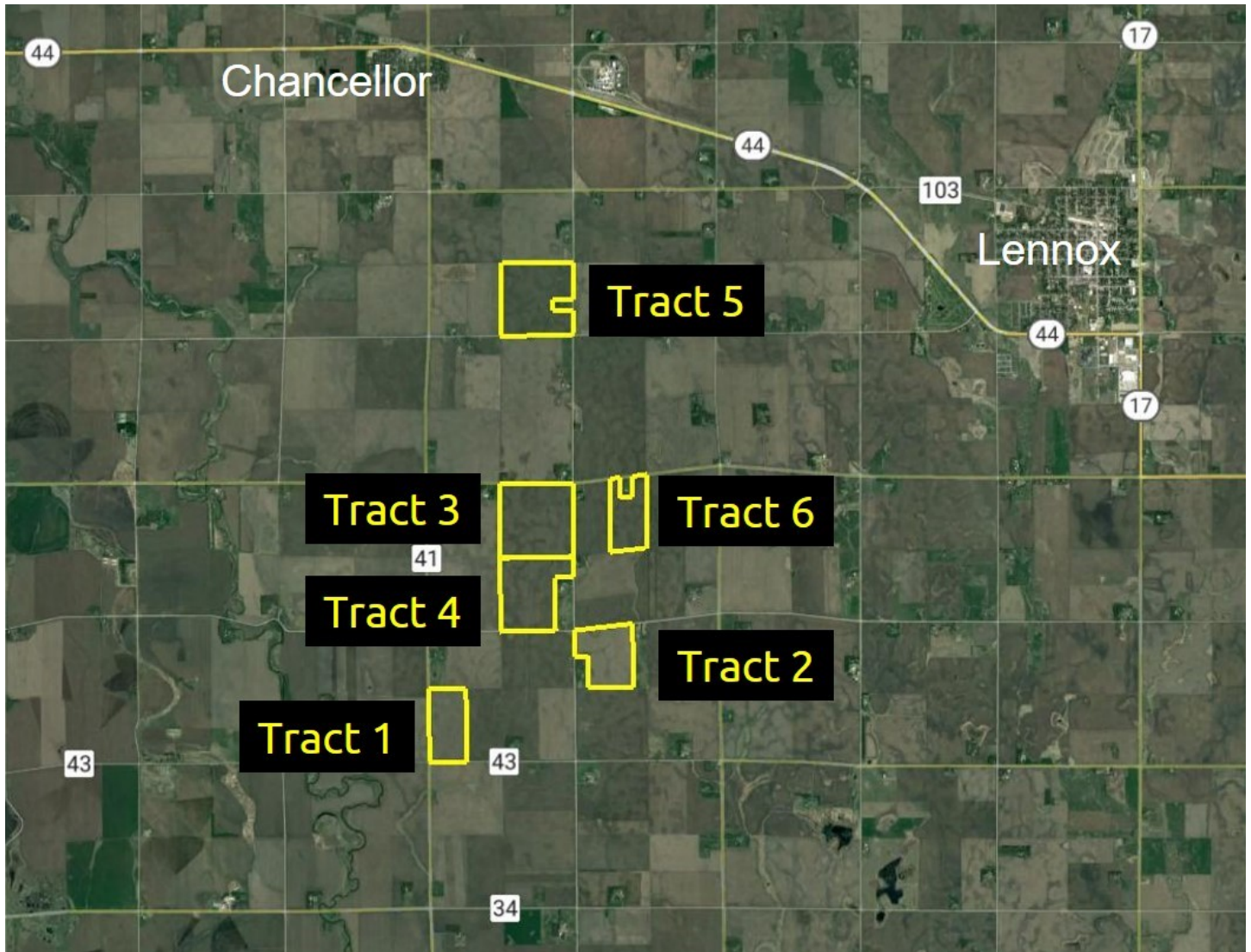
Crop	Base Acreage	PLC Yield	CCC-505 CRP Reduction
CORN	34.97	160	0.00
SOYBEANS	35.45	45	0.00
Total Base Acres:	70.42		

Owners: WINTERBOER FARMS, LLC



Tract 6





Notes:

[illegible]



Our auctions are not about us.
They're about you and your lifetime investments.
As the real estate landscape evolves, one thing
we guarantee is that you can trust us to
get the job done right.

We believe strongly that selling land and property is about more than a profit. It's about the process from start-to-finish. And, our process is led with integrity, trust and honesty. The relationships we've built over the years are the proof that our process works.



Joel R. Westra

605.310.6941
joel@westraauction.com



Phil Eggers

605.351.5438
phil@westraauction.com



Joel A. Westra

605.957.5222
joelawestra@westraauction.com



Jonathan Hagena

605.728.7282
jonathan@westraauction.com



Visit our website to learn more, read
the auction listing and view photos:



westraauction.com